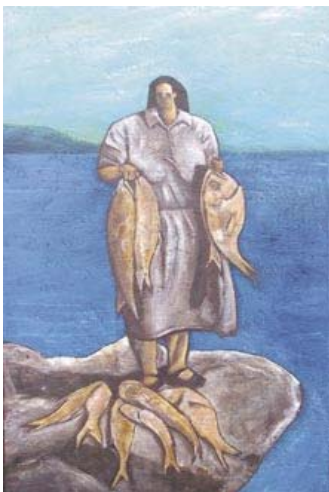


BRYCE BROWN

1971 born in Auckland
 1997 international travel studying works in the galleries and museums of Europe. Discovered an ability to paint
 1999 first solo exhibition in Whangarei
 2000 travelled to Turkey, gained inspiration and began new body of work
 2004 studied Graphic Design in Tauranga
 2005 became a full-time artist with three exhibitions during the year. Sold work to The John Deere International Art Collection and other international collectors



2006 work accepted by major US gallery, Discovery Galleries, Washington DC. Continued to research and paint historical New Zealand themes, landscapes and environment

Lives in Mount Maunganui

Represented by:

Arts Desire, Warkworth
 Palette, North Shore
 Mixed Media, Hamilton
 The Art Boutique, Tauranga
 4 Art's Sake, Ohope
 The Artist's Room, Dunedin

Website: www.brycebrowncart.com



Opposite: *Brothers* 2005
 Acrylic on canvas
 122 x 182cm
 John Deere Art collection
 Illinois, USA

Left: *The Fisherwoman* 2005
 Acrylic on canvas
 96 x 51cm
 Artist's collection

Below: *The Mariner* 2005
 Acrylic on canvas
 76 x 101cm
 Private collection

