

2006

Discovery Galleries
Washington DC
USA

WARD Gallery
Michigan
USA

The Teacher
2006
76 x 76 cm
Private collection
USA

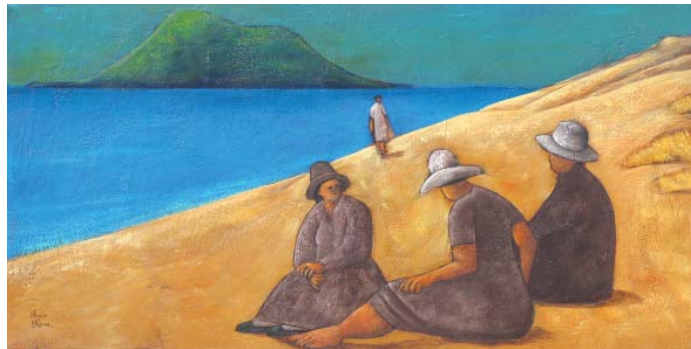


U.S gallery representation - media release 2006.

Bryce Brown's paintings are now available through two U.S galleries, Discovery Galleries in Washington DC and W.A.R.D gallery in Harbor Springs, Michigan.

W.A.R.D gallery has been operating for 16 years in Harbor Springs and its principle focus is fine art. They have added Bryce to their already impressive collection of representational and abstract artists from around the world.

Discovery Galleries are Washington DC's premier gallery representing some of the world's leading artists including surrealist painter Rob Gonsalves. They have been operating for twelve years and specialize in finding and promoting artists throughout their career.



Matakana Ladies
2006
51 x 102 cm
Private collection
USA

2006

Left.
Washday
2006
101 x 76 cm

Right.
Woman with Cow and Calf
2006
84 x 122 cm.







New Zealand's Favourite Artists

Published 2006 by Saint Publishing.

2006

Bryce is an artist who moves forward in leaps from one painting to the next capturing the essence of his subjects in a distinctive style that is powerful yet subtly moving.

Denis Robinson. Editor of New Zealand's Favourite Artists.

Bryce Brown is one of sixty New Zealand artists chosen to be published in Volume 1 of New Zealand's Favourite Artists. The book, published in September 2006 is a double-page spread each featuring the details and a selection of works of a further 60 artists exhibiting in New Zealand.



Left.
Toheroa
2006
76 x 101 cm
Private collection
Australia.

Right.
**Tipuna Wahine
(Grandmother)**
2006
76 x 102 cm
Private collection
NZ

2009



Oranga
2008/2009
122 x 152 cm
Private collection
NZ

I began *Oranga* at the end of a very busy year in 2008. I had opened up my new studio to be an art space for other artists to exhibit, had a very successful opening, then starting painting this large work, which I almost gave up on and painted over! On the advice of a friend and client, I continued in the following months and produced one of my best works! *Oranga* is the Maori word for health.



View from Te Ranga 2010 76 x 152

Two cloaked figures in mourning, seen from the 1864 battlefield of Te Ranga. This battle came far sooner than expected, and unlike Gate Pa, it was a much debated *British* victory. This was in retaliation for the British loss (with heavy casualties) at Gate Pa three months earlier.

The valley shows a way of escape, typical for sites where Maori fortifications or *Pa* were built.

2010

Commission
Nga Potiki memorial



Mataitai 2010 80 x 240 cm. Commissioned by Foodstuffs NZ.

Description for plaque

The dominant tribe of this area is Nga Potiki a Tamapahore. Tamapahore (c .1712) is the eponymous chief of the tribe Nga Potiki from whom the people of Nga Potiki descend.

This painting depicts the Papamoa and Te Whaaro Hills which other tribes of

Tauranga Moana can identify with.

Harvesting of shellfish was common in coastal Papamoa area given the extensive number of archaeological and cultural features discovered over many years through urban and commercial development.

This art work is a dedication to the people of Nga Potiki a Tamapahore.

The involvement of the Nga Potiki tribe in this project has enabled the direct expression of their history and culture and in good faith Foodstuffs endeavoured to keep that commitment.

The participation and engagement of Tangata whenua and in particular Nga Potiki, is recognition of the indigenous status and occupation within the eastern area of Tauranga and the arrival of Maori from the Takitimu, Te Arawa, and Mataatua waka.

On behalf of Nga Potiki a Tamapahore I would like to thank Bryce Brown, Savory Construction and the Foodstuffs team for their overwhelming support.

- Matire Duncan, Nga Potiki a Tamapahore.

This painting is hanging in the main lobby of Pak & Save. Domain Rd, Papamoa, NZ



2010

I am currently working from my Tauranga studio in Second Avenue, continuing to explore historical NZ themes, figures in landscape, studies and portraits.

I always have something in progress here, works ready to be sent off to galleries, as well as older works.

2011 will be an exhibition year, most likely in more than one New Zealand city.

I'm always interested in meeting with anyone interested in my work, to talk about any commissions, collaborative ideas and works I have in progress.

I hope you have enjoyed this sample of my first five years as a *full-time* artist! I look forward to many more...

- Bryce Brown. September 2010.

From Afar
2010
122 x 91 cm